
Claim Number:**Policy Number:****Type of Loss:**

Date of Loss:

Date Received:

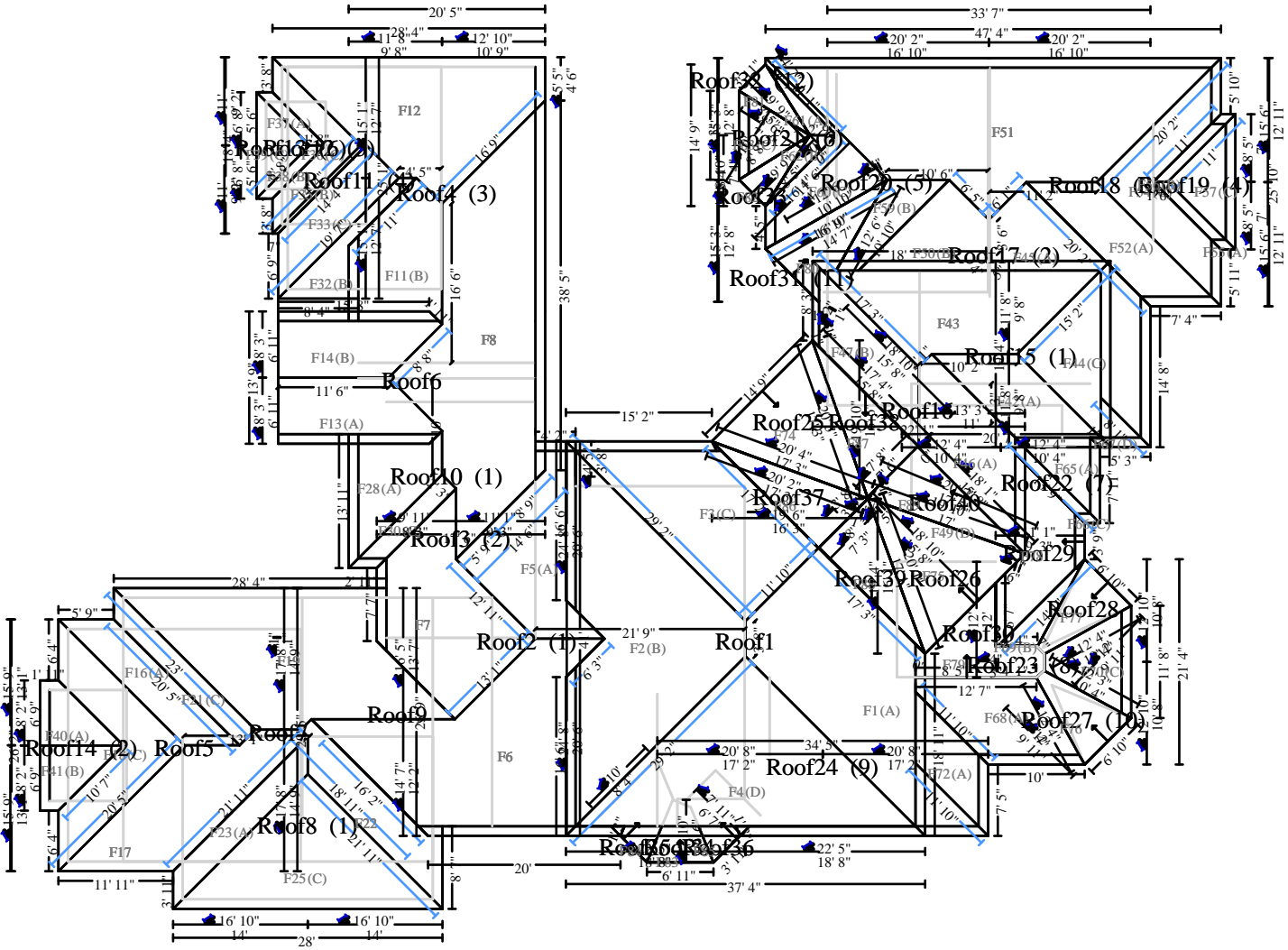
Date Inspected:

Date Entered: 10/13/2022 10:23 AM

Price List: ARLO8X_AUG23
Restoration/Service/Remodel
Estimate: ESX_REPORT

Grand Total Areas:

0.00 SF Walls	0.00 SF Ceiling	0.00 SF Walls and Ceiling
0.00 SF Floor	0.00 SY Flooring	0.00 LF Floor Perimeter
0.00 SF Long Wall	0.00 SF Short Wall	0.00 LF Ceil. Perimeter
0.00 Floor Area	0.00 Total Area	0.00 Interior Wall Area
3,530.71 Exterior Wall Area	0.00 Exterior Perimeter of Walls	
8,817.11 Surface Area	88.17 Number of Squares	921.76 Total Perimeter Length
165.79 Total Ridge Length	652.12 Total Hip Length	



Sketch Roof Annotations

Main Level

Face	Square Feet	Number of Squares	Slope - Rise / 12
F1	355.06	3.55	8.00
F2	481.81	4.82	8.00
F3	271.38	2.71	8.00
F4	418.78	4.19	8.00
F5	188.67	1.89	8.00
F6	463.03	4.63	8.00
F7	238.77	2.39	8.00
F8	515.92	5.16	8.00
F11	138.96	1.39	8.00
F12	299.87	3.00	8.00
F13	121.29	1.21	8.00
F14	121.29	1.21	8.00
F16	90.41	0.90	8.00
F17	198.82	1.99	8.00
F18	150.73	1.51	8.00
F19	389.90	3.90	8.00
F21	54.28	0.54	8.00
F22	105.95	1.06	8.00
F23	65.90	0.66	8.00
F25	235.56	2.36	8.00
F28	105.21	1.05	8.00
F30	31.48	0.31	8.00
F32	52.42	0.52	8.00
F33	88.12	0.88	8.00
F35	6.42	0.06	8.00
F36	64.20	0.64	8.00
F37	11.07	0.11	8.00
F38	11.07	0.11	8.00
F39	36.72	0.37	8.00
F40	43.08	0.43	8.00
F41	43.08	0.43	8.00
F42	103.29	1.03	8.00
F43	249.45	2.49	8.00
F44	112.63	1.13	8.00
F45	173.93	1.74	8.00
F46	144.54	1.45	8.00
F47	110.11	1.10	8.00
F49	0.41	0.00	8.00
F50	89.47	0.89	8.00
F51	550.24	5.50	8.00
F52	113.69	1.14	8.00
F54	140.68	1.41	8.00
F55	12.66	0.13	8.00
F56	12.66	0.13	8.00

Main Level - Continued

Face	Square Feet	Number of Squares	Slope - Rise / 12
F57	59.29	0.59	8.00
F59	49.54	0.50	8.00
F60	86.07	0.86	8.00
F61	12.22	0.12	8.00
F62	12.16	0.12	8.00
F63	40.65	0.41	8.00
F64	0.00	0.00	8.00
F65	46.87	0.47	8.00
F66	15.23	0.15	8.00
F67	16.74	0.17	8.00
F68	129.80	1.30	8.00
F69	30.72	0.31	8.00
F70	72.85	0.73	8.00
F71	0.00	0.00	8.00
F72	67.35	0.67	8.00
F74	139.13	1.39	8.00
F75	137.91	1.38	8.00
F76	47.25	0.47	8.07
F77	47.18	0.47	8.07
F78	110.42	1.10	8.00
F79	63.39	0.63	0.00
F80	60.36	0.60	7.23
F81	18.91	0.19	6.94
F82	18.99	0.19	6.96
F83	24.17	0.24	8.00
F84	11.10	0.11	8.00
F85	11.10	0.11	8.00
F86	68.18	0.68	8.00
F87	69.80	0.70	8.00
F88	67.03	0.67	8.00
F89	69.67	0.70	7.58
Estimated Total:	8,817.11	88.17	